

Stunning Two-Bedroom “Deck” House Overlooking Emsworth Yacht Harbour



A modern two-bedroom beautifully furnished home at Mill Quay in Emsworth Yacht Harbour, adjacent to the renowned “Deck” Cafe.

Convenient for Portsmouth, Havant, Chichester etc.

Available for rental on a daily or longer term basis during May to October 2014



Upstairs the open-plan lounge, dining area and kitchen is cosy, comfortable and stylish with flat screen TV, audio system and wifi.



The kitchen has a built-in electric oven and separate microwave, a fridge/freezer, and an integrated dishwasher.

Large double glazed sliding doors open onto the large balcony with a dining table for six and casual, contemporary seating for relaxing drinks or supper looking over the harbour. The view is west overlooking Emsworth for beautiful sunsets.

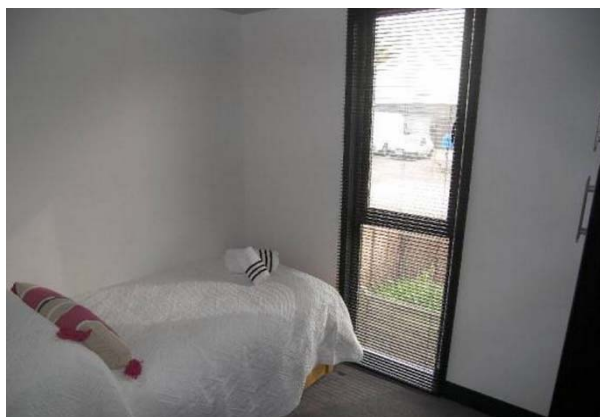
Enjoy the tranquility of the marine environment and relax on your private deck on a warm summer evening with a refreshing cold drink !

Stunning Two-Bedroom “Deck” House Overlooking Emsworth Yacht Harbour

The master bedroom continues the contemporary styling of the house and features a large double bed with built-in double wardrobe and storage units.



The second bedroom has a fitted wardrobe and double cupboard with vanity top. The bed can be converted from a single bed to a double.



A modern fully tiled bathroom suite has a panelled bath, shower, wash basin and loo.



An additional toilet is downstairs in the entry area with a complete laundry and wet room for sailing gear or muddy boots !

There is an outside parking area beneath the deck house with external lighting and space for dinghy parking to the rear.

Rates

1 person £85 per night
2 persons £120 per night
For 3 consecutive nights or more, by 2 persons, deduct 15%

Supplement for Breakfast “at The Deck”

Continental £5.50 pp
Full English £10.50 pp

Weekend special for 2 persons to include Friday & Saturday nights, breakfast on Saturday & Sunday plus Tapas at the Deck on Friday evening – Total £280

Stunning Two-Bedroom “Deck” House Overlooking Emsworth Yacht Harbour



Our Location

We are located a few minutes, from Emsworth town centre which is approximately midway between Portsmouth and Chichester. The Yacht Harbour is located on the road to Thorney Island.

There are easy footpaths to Emsworth town centre for shops, restaurants & pubs and travel via trains or buses.

By Road

Emsworth is accessed via the A259 coastal road which was formerly the A2, which now bypasses the town. The two roads join up just to the West of the town near to the junction with the A3 with its connections to the motorway network. The yacht harbour is a few minutes' by car from Emsworth town centre or several minutes' walk by foot via the mill pond footpath.

By Air

The nearest airports are at Gatwick (50 minutes) and Southampton (25 minutes). The airports have numerous car rental companies.

By Rail

Emsworth station is 400 metres north of the town and the line runs East/West to Chichester and Portsmouth. Taxis are available. For rail travel information, visit the website of National Rail enquiries.

General

For any general travel/timetable enquiries, there is a nationwide travel information service available, called Traveline. One number gives access to information about all rail, coach, bus, ferry and internal air services. Telephone 0870 608 2608