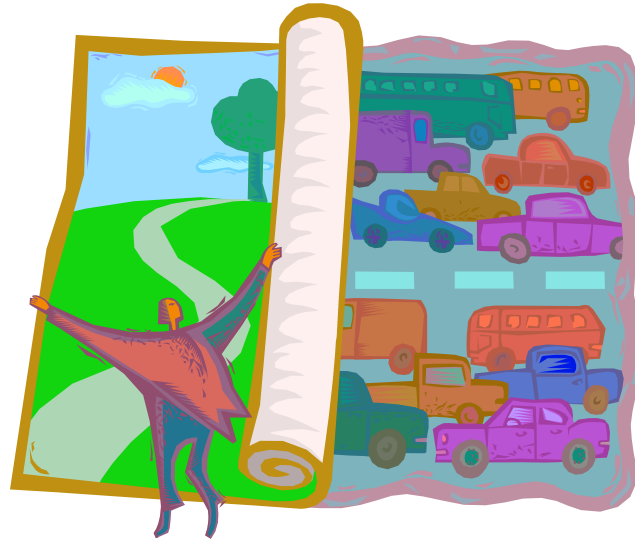


EMSWORTH RESIDENTS' ASSOCIATION

Member of the Havant District Residents Liaison Group, striving for Wellbeing before House Building

URGE YOU TO



Mind “your” GAP, and DEFEAT URBAN SPRAWL
An outline planning application has been submitted
to build 280 houses !!!!

on probably the last major open space
between Emsworth and Westbourne.

At a recent Planning Forum held by Havant Borough Council to hear Linden Homes’ proposals, your elected Councilors, many Residents’ Organisations, Representatives from all the many services that protect our health and wellbeing, and a packed public gallery all had very strong objections and many pertinent question were asked of the developer. These were far from satisfactorily answered and Linden Homes’ agents were sent away with instructions to come up with convincing answers to the very many serious concerns, which are summarised on the reverse of this notice

to assist you with your own letter.

We earnestly ask you to write your own personal objection to this desecration of our countryside which must be addressed to:-

***Aaron Wright, Case Officer, The Development Control Team,
Havant Borough Council, Havant, Hants. PO9 2AX.***

Or use the HBC website and fill in the on-line comment form.

In either case the reference is: No. 10/74014/000, Hampshire Farm,
Westbourne Road, Emsworth, PO10 7RN

Objections must be in by 6th May

Points to consider for objections to the Hampshire Farm Site

These notes should be used as points for consideration in any objections. Write your objections in your own words on points that you are most concerned about whether they are on this list or not.

- Site has been used for agriculture in the past. Farming is now more important for our food supply and agricultural land should not be lost to houses.
- Hampshire Farm was submitted as an objection to the Local Plan and included by the Inspector. No democratic process has been entered into regarding its inclusion in the plan, or on its effect on Emsworth. By allowing the present application HBC would also short cut the upcoming review of the Core Strategy.
- Number of houses proposed risen from 250 in HBC Local Plan for the 8.4 hectares of building land to 280. (33.3 dwellings per hectare) 30 dph should be the target for the outskirts of Emsworth.
- Chichester District Council has major concerns over the allocation of 800 homes for Emsworth when viewed alongside the 7,100 allocated in the South East Plan for this part of Chichester District.
- Concerns about public transport to the site mean a complete Travel Plan showing how people can get to the site by means other than private car must be completed. This must be resolved before any approval is granted.
- Traffic affects on Westbourne and Emsworth will be significant from residents, deliveries, the planned surgery, and during the construction phase. This must be considered in conjunction with the extra traffic from the Oak Tree Drive development currently going through the planning stage.
- Parking issues in Westbourne will arise from increased use of The Grove and East Street which are already reduced to single lane by parked cars.
- Surface water drainage is a key issue. The developer proposes a Sustainable Urban Drainage System feeding a balancing pond near the Wren Centre and draining into the Ems through a control system. It is vital that the flow is completely free of pollution before it is released into the Ems. It is also **essential** that the system is managed and maintained indefinitely.
- The proposed new GPs' Surgery and Pharmacy on the site, the closure of the Westbourne Surgery and the reduced use of Emsworth Surgery will impact shops, particularly the Pharmacies in both Emsworth and Westbourne.
- Loss of amenity. Some residents realise that their homes and gardens will be overlooked by 2 or 2½ storey buildings.
- The nearest Emsworth primary school, which is fully subscribed, is 1.1 kilometres from the centre of the site and the closest source of secondary education is more than 2 kilometres away – more traffic movements. The Westbourne Primary gives priority to West Sussex children, then their siblings, then out of County.
- Wildlife habitat is being lost. Notably there are bats in the area. The developer's bat surveys indicates that more checks are necessary.
- Emsworth Design Statement approved by HBC makes reference in several "Design Considerations" to points relevant to Hampshire Farm. Particularly items 4, (photo 3) 12, 13, 15, 19, 33, 34, 35. The EDS is available at Emsworth Library and on the ERA Website: www.emsworthresidents.co.uk
- Emsworth Design Statement Supplement, not approved by HBC but approved by Emsworth residents makes reference in several "Design Points" to issues relevant to Hampshire Farm. Particularly DP 1d, 1e, 1f, 1o, 1p, 3q, 3r, 5a. The EDS Supplement is available on the ERA Website: www.emsworthresidents.co.uk

**REMEMBER !! DEADLINE FOR WRITTEN OBJECTIONS TO BE RECEIVED AT
HBC COUNCIL OFFICES'
ADDRESS OVER THE PAGE
BEFORE 6TH MAY**